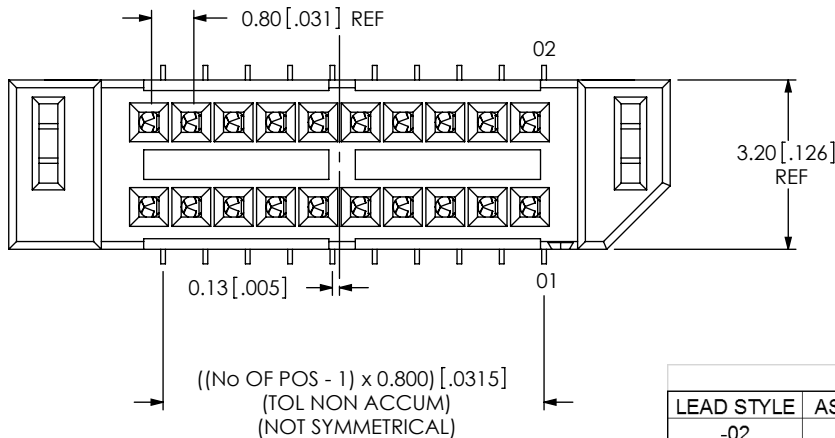


DO NOT SCALE FROM THIS PRINT

DESIGNED & DIMENSIONED IN MILLIMETERS [INCHES]

SEM-X-1XX-XX-XX.X-XX-D-XX-XX

FIG. 1 SEM-110-02-03.0-XX-D SHOWN



BODY OPTION  
(LEAVE BLANK IF OPTION NOT USED, USE SEM)  
L: FRICTION LOCK  
(USE SEML, SEE FIG. 6, SHEET 3)  
\*S: SLIM  
(USE \*SEMS, SEE FIG. 7, SHEET 3)  
(NOT AVAILABLE WITH -A, -LC, OR -WT)  
(ONLY AVAILABLE WITH -TR)

No OF POSITIONS  
-05 THRU -50 (PER ROW)  
(IN 5 POS INCREMENTS)

LEAD STYLE  
-02: SURFACE MOUNT

STACK HEIGHT  
-03.0: 3 MM

PLATING SPECIFICATION  
-H: HEAVY, .000030 GOLD ON CONTACT, GOLD FLASH ON TAIL  
-G: GOLD, .000010 GOLD ON CONTACT, GOLD FLASH ON TAIL  
-FG: FLASH, .000003 ON ENTIRE CONTACT

OPTION  
-TR: TAPE & REEL  
-K: POLYIMIDE FILM  
(USE K-500-300, SEE FIG. 5, SHT 2)

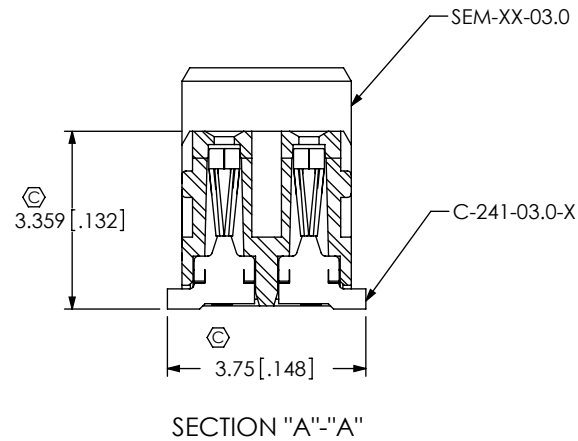
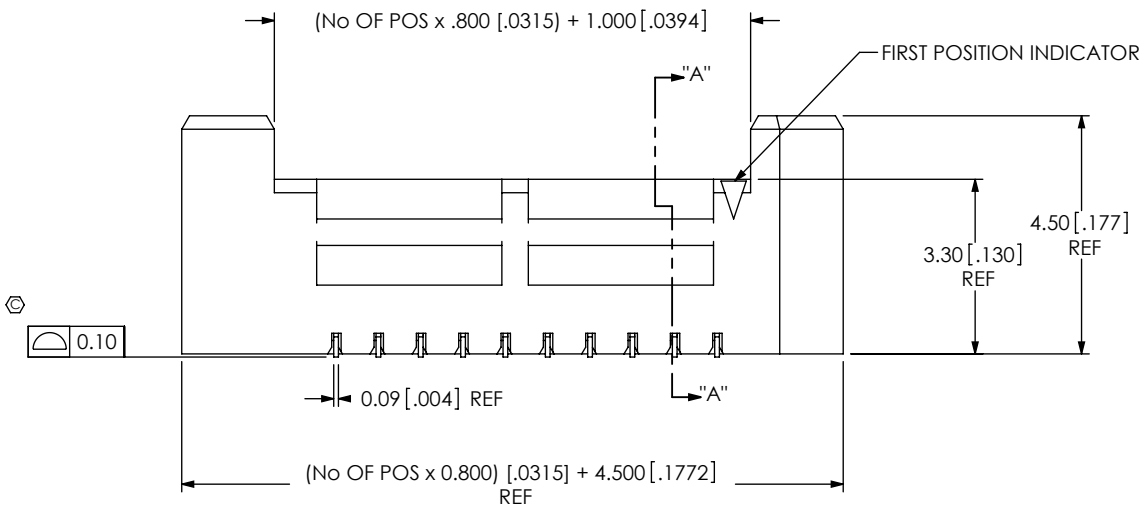
OPTION  
-A: ALIGNMENT PIN (SEE FIG. 2, SHEET 2)  
(NOT AVAILABLE WITH -LC OR -WT)  
(NOT AVAILABLE ON SEML OR SEMS)  
-LC: LOCKING CLIP (SEE FIG. 3, SHEET 2)  
(NOT AVAILABLE WITH -A OR -WT)  
(NOT AVAILABLE ON SEML OR SEMS)  
-WT: WELD TAB (SEE FIG. 4, SHEET 2)  
(NOT AVAILABLE WITH -A OR -LC)  
(STANDARD ON SEML)  
(NOT AVAILABLE ON SEMS)

ROW SPECIFICATION  
-D: DOUBLE ROW

\* = NOT RELEASED

CRITICAL DIMENSION INSPECTION TABLE

LEAD STYLE	ASSEMBLY OPERATION	START-UP INSPECTION CODE A	IN PROCESS INSPECTION CODE B
-02	FILL C-241	C1, C2, C3, C4, C5	C6, C7
-02	FILL WT-36		C8, C9
-02	FILL LC-06		C10, C11
-02	ADD KAPTON PAD	C12	C12



NOTES:

- ⊗ REPRESENTS A CRITICAL DIMENSION.
- MINIMUM PUSHOUT FORCE FOR CONTACT, LOCKING CLIP AND WELD TAB: 2.22N.
- HEIGHT VARIATION BETWEEN ANY TWO CONTACTS: 0.13 MAXIMUM.
- PARTS TO BE PACKAGED IN TRAYS UNLESS OTHERWISE SPECIFIED.
- POSITIONS -05 THRU -20 WILL HAVE ONLY ONE FRICTION LOCK.  
POSITIONS -25 THRU -40 WILL HAVE TWO FRICTION LOCKS.  
POSITIONS -45 THRU -50 WILL HAVE THREE FRICTION LOCKS.
- NOTE DELETED.

UNLESS OTHERWISE SPECIFIED, DIMENSIONS ARE IN MILLIMETERS. TOLERANCES ARE:  
DECIMALS ANGLES  
X.X: ±0.3 [.01] 2°  
X.XX: ±0.13 [.005]  
X.XXX: ±0.051 [.0020]

PROPRIETARY NOTE  
THIS DOCUMENT CONTAINS INFORMATION CONFIDENTIAL AND PROPRIETARY TO SAMTEC, INC. AND SHALL NOT BE REPRODUCED OR TRANSFERRED TO OTHER DOCUMENTS OR DISCLOSED TO OTHERS OR USED FOR ANY PURPOSE OTHER THAN THAT WHICH IT WAS OBTAINED WITHOUT THE EXPRESSED WRITTEN CONSENT OF SAMTEC, INC.



520 PARK EAST BLVD, NEW ALBANY, IN 47150  
PHONE: 812-944-6733 FAX: 812-948-5047  
e-Mail info@SAMTEC.com code 55322

MATERIAL: DO NOT SCALE DRAWING SHEET SCALE: 7:1  
INSULATOR: VECTRA E1301  
CONTACT: #25 BeCu, HALF HARD  
LOCKING CLIP: PHOS BRONZE 510  
WELD TAB: BRASS ALLOW 260, FULL HARD

DESCRIPTION:  
.8MM TIGER EYE MICRO SOCKET  
DWG. NO.  
SEM-X-1XX-XX-XX.X-XX-D-XX-XX  
BY: B RAY 10-19-2007 SHEET 1 OF 3

FIG. 2  
SEM-110-02-03.0-XX-D-A SHOWN

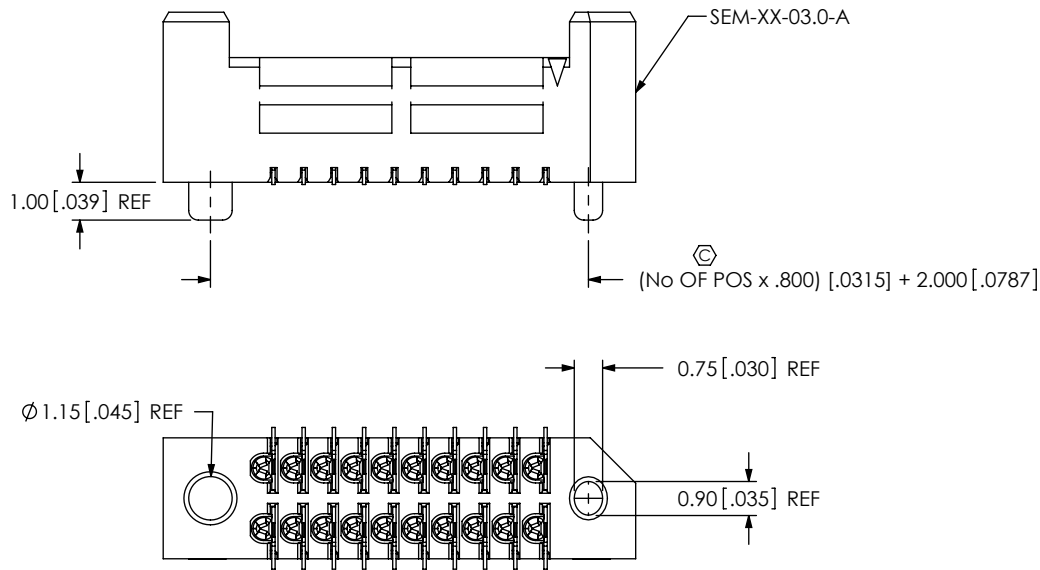


FIG. 3  
SEM-110-02-03.0-XX-D-LC SHOWN

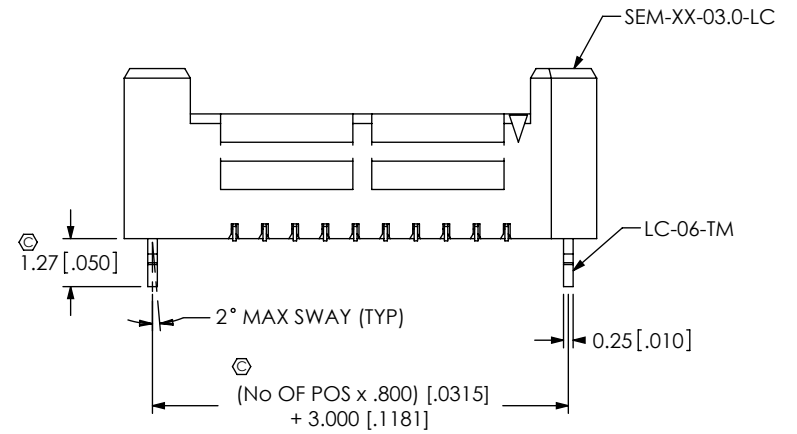
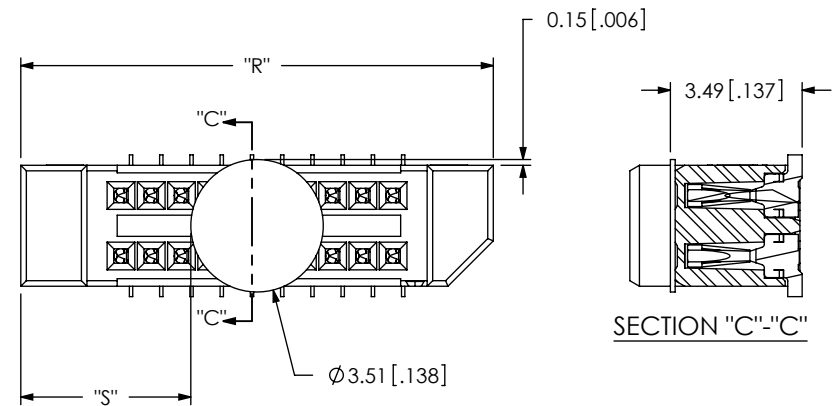
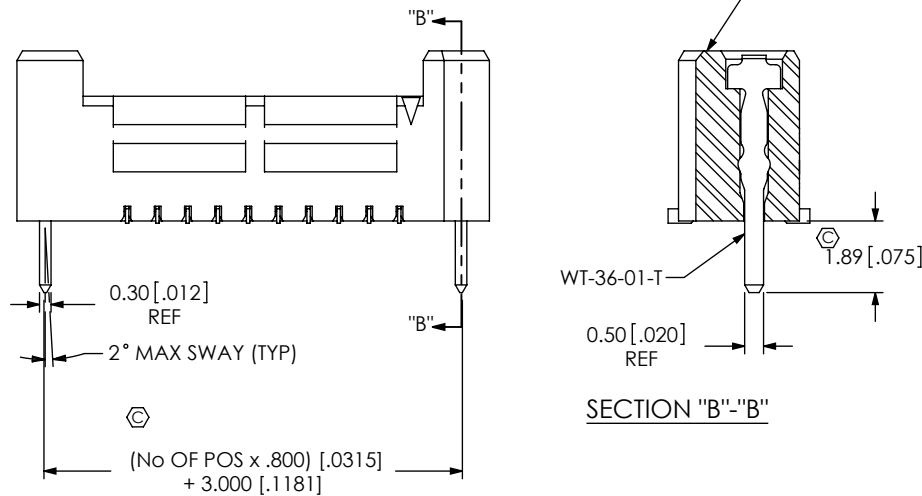


FIG. 5  
SEM-110-02-03.0-XX-D-K SHOWN



NOTE: "R" = OVERALL LENGTH (REF)  
"S" = {"R" - 3.51 [.138]}/2 [.0787] ± 0.51 [.02]

FIG. 4  
SEM-110-02-03.0-XX-D-WT SHOWN



PROPRIETARY NOTE  
THIS DOCUMENT CONTAINS INFORMATION  
CONFIDENTIAL AND PROPRIETARY TO  
SAMTEC, INC. AND SHALL NOT BE REPRODUCED  
OR TRANSFERRED TO OTHER DOCUMENTS OR  
DISCLOSED TO OTHERS OR USED FOR ANY  
PURPOSE OTHER THAN THAT WHICH IT WAS  
OBTAINED WITHOUT THE EXPRESSED WRITTEN  
CONSENT OF SAMTEC, INC.

DO NOT SCALE DRAWING

SHEET SCALE: 5:1

**samtec**

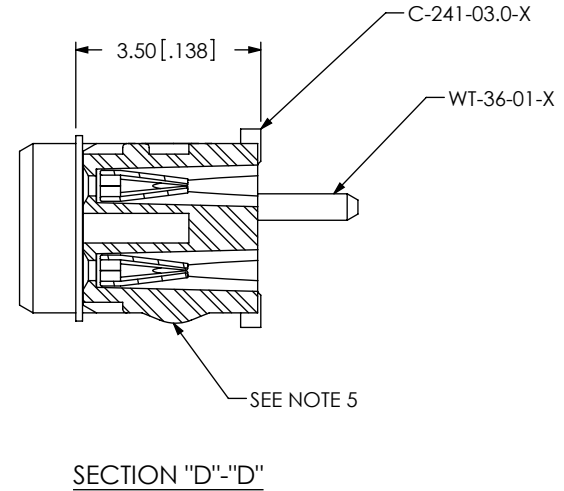
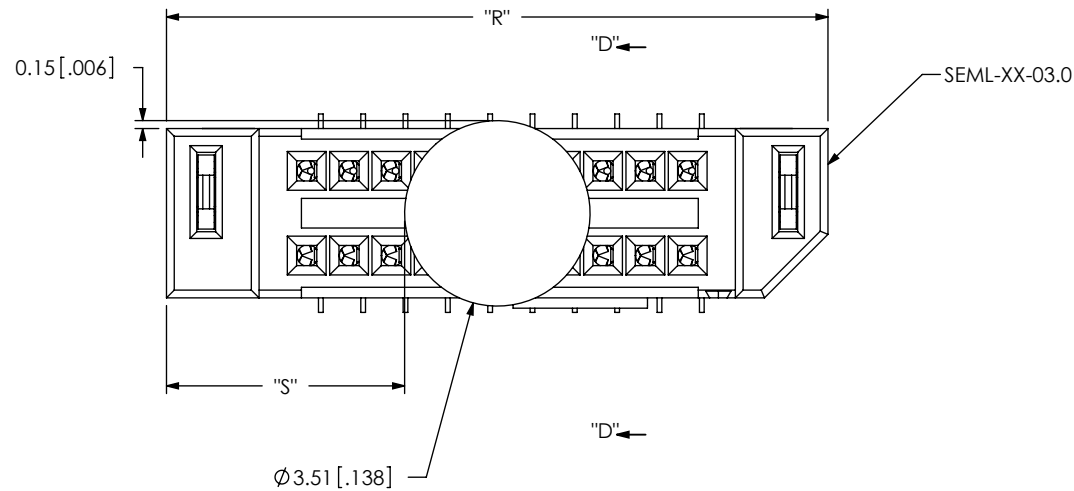
520 PARK EAST BLVD, NEW ALBANY, IN 47150  
PHONE: 812-944-6733 FAX: 812-948-5047  
e-Mail: info@SAMTEC.com code 55322

DESCRIPTION:  
.8MM TIGER EYE MICRO SOCKET

DWG. NO.  
**SEM-X-1XX-XX-XX.X-XX-D-XX-XX**

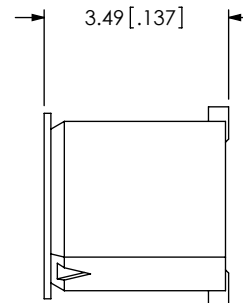
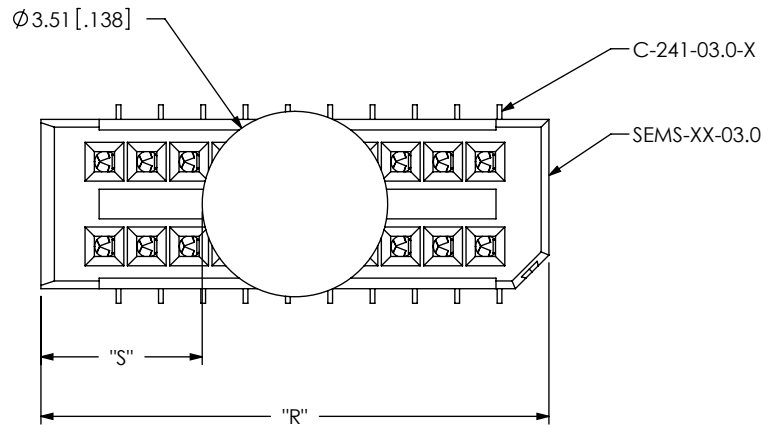
BY: B RAY 10-19-2007 SHEET 2 OF 3

FIG. 6  
SEML-110-02-03.0-XX-D-WT-K SHOWN




NOTE: "R" = OVERALL LENGTH (REF)  
 "S" =  $\{("R" - 3.51 [.138]) / 2\} \pm 0.51 [.02]$

FIG. 7  
SEMS-110-02-03.0-XX-D-K SHOWN



NOTE: "R" =  $\{(No. OF POS \times 0.800) + 1.600\} \pm 0.05$   
 "S" =  $\{("R" - 3.51 [.138]) / 2\} \pm 0.51 [.02]$

<p>PROPRIETARY NOTE                  THIS DOCUMENT CONTAINS INFORMATION CONFIDENTIAL AND PROPRIETARY TO SAMTEC, INC. AND SHALL NOT BE REPRODUCED OR TRANSFERRED TO OTHER DOCUMENTS OR DISCLOSED TO OTHERS OR USED FOR ANY PURPOSE OTHER THAN THAT WHICH IT WAS OBTAINED WITHOUT THE EXPRESSED WRITTEN CONSENT OF SAMTEC, INC.</p> <p>DO NOT SCALE DRAWING</p> <p>SHEET SCALE: 7:1</p>	
	<p>520 PARK EAST BLVD, NEW ALBANY, IN 47150                  PHONE: 812-944-6733 FAX: 812-948-5047                  e-Mail info@SAMTEC.com code 55322</p>
	<p>DESCRIPTION:                  .8MM TIGER EYE MICRO SOCKET</p>
	<p>DWG. NO.                  SEMX-1XX-XX-XX.X-XX-D-XX-XX</p>
<p>BY: B RAY 10-19-2007 SHEET 3 OF 3</p>	